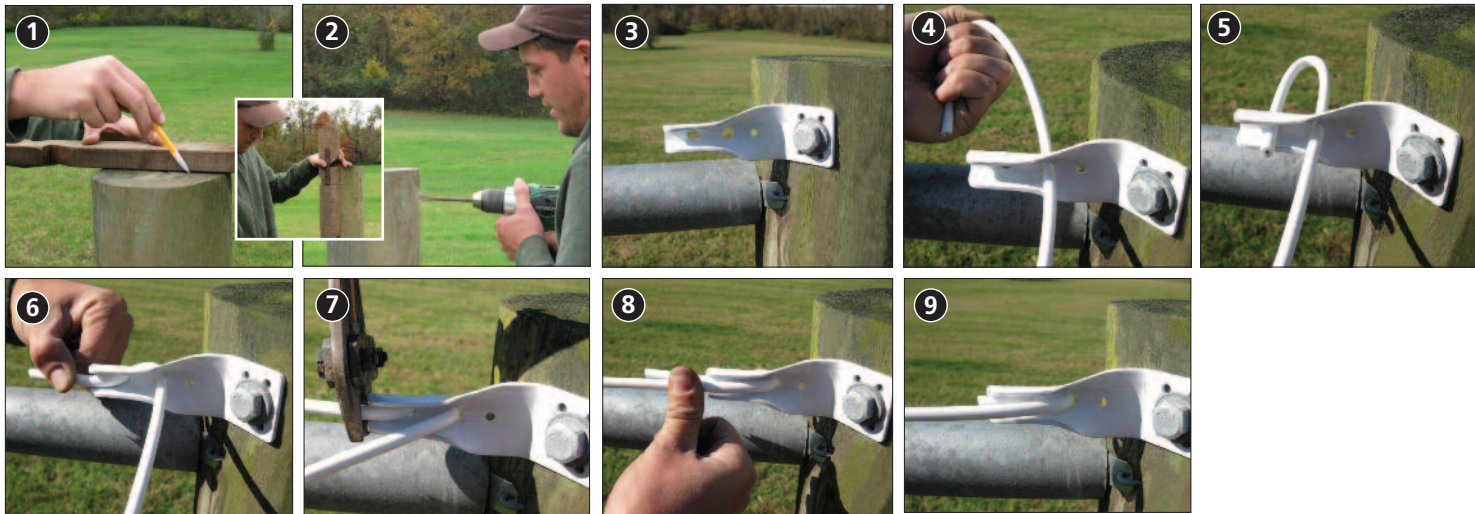
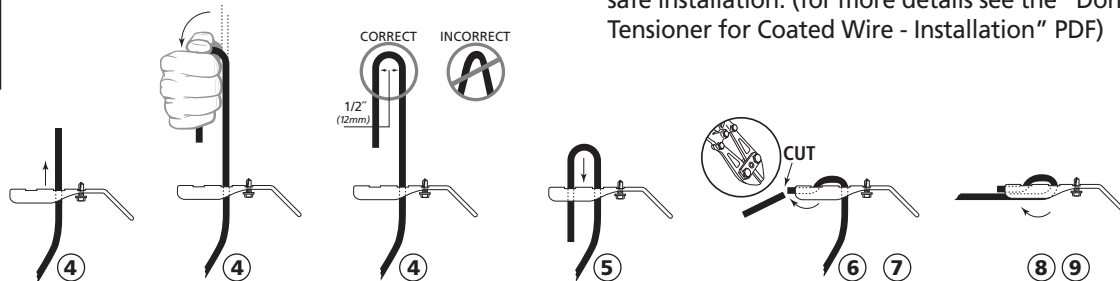
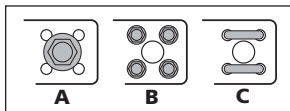


# HORSECOTE® – END POST ATTACHMENT FOR COATED WIRE

## Non-Conductive Coated Wire



- ❶ Mark the posts for proper buckle placement (for more details see the "How To Mark Posts" PDF).
- ❷ For ease of attachment, drill a 3/8" (9mm) pilot hole for a 1/2" (12mm) lag screw. Do not overtighten lag screw!
- ❸ Use the proper buckle for your application:
  - Pre-Bent 45° Attaching Buckle: 45° provides correct mounting position (for end and gate posts)
  - Straight Attaching Buckle: (use on square posts, buildings or other flat surfaces)
  - Attaching options for non-insulated buckles:
    - A) Lag Screw and Washer (shown in photo)
    - B) Four - Wide Shoulder Hex Head Drive Screws
    - C) Two - 2" (51mm) barbed staples



- ❹ All Buckles are laced the same (Pre-Bent 45° Attaching Buckle shown). See diagrams below.
  - Insert coated wire into second hole (closer to center of Buckle)
  - Using your hand - bend the end of the coated wire to as close to parallel to each other as possible. Looking for 1/2" (12mm) radius bend between wires.
- ❺ Insert the end into the remaining hole and push both wires back through the holes as far as possible.
- ❻ First bend the end of the coated wire up into the buckle.
- ❼ Use bolt cutters to trim off any surplus.
- ❽ The second bend takes the coated wire up toward buckle, tight against the first bend.
- ❾ Final tension the fence - creating a nice, clean and safe installation. (for more details see the "Donut Tensioner for Coated Wire - Installation" PDF)

### Horserail® Products

- Pre-Bent 45° Attaching Buckle
- Straight Attaching Buckle

### Other Tools Needed

- Bolt Cutters
- Impact Wrench and Socket
- Hammer
- Hex Head Screw Gun

### Other Related PDF Info Sheets

- How to Mark Posts
- Donut Tensioner for Coated Wire - Installation

For More Details,  
Tips & Techniques  
on Building Fences,  
Please visit our website:  
[www.horserail.com](http://www.horserail.com)

